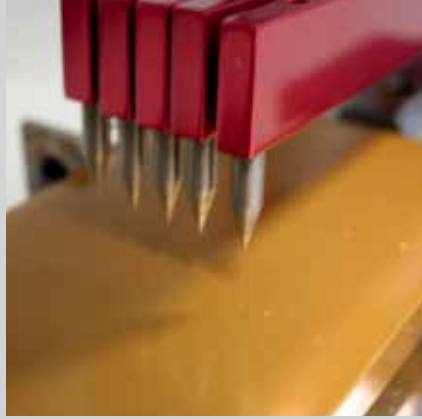




AUTOMOTIVE TESTHOUSE

RESISTANCE TESTS





RESISTANCE TESTS

The materials used in automobiles are exposed to a multitude of care products, cosmetics and environmental influences. Whether or not a material meets the requirements can be simulated through various soiling, cleaning, wipe and scratch tests.

THE FOLLOWING IS AN EXTRACT FROM OUR RANGE OF SERVICES FOR THIS TEST SPECTRUM

CROSS-CUT, X-CUT SCRATCH TESTS

- DIN EN ISO 2409
- VW PV 3952
- VDA 621-411
- Ford FLTM BO 162-01

CROCK- AND FLOCK TESTS

- DIN EN ISO 105-X12
- VW PV 3906
- ISO 9352
- Daimler DBL 5456

ABRASION TESTS:

ABREX, TABER

- BMW GS 97034
- ASTM D1044

COLOUR AND GLOSS MEASUREMENT

- DIN 67630
- ISO 2813
- DIN EN 20105-A02 and -A05
- ISO 7724-1 to -3

CREAM RESISTANCE

- VW PV 3964
- Daimler DBL 5399

CHEMICAL- AND OPERATING FLUIDS

- Daimler DBL 5416
- VW TL 211
- VDA 621 412

AND MANY MORE

GLOBAL

www.automotive.sgs.com
auto.global@sgs.com

EUROPE

Germany - Herten
t +49 2366 305 - 647/+49 2366 305 - 645
automotive.testhouse@sgs.com

ASIA

China - Shanghai
t +86 021 6119 6462/+86 021 6119 6469
sh.auto@sgs.com

China - Guangzhou
t +86 020 8215 5577/+86 020 8215 5566
gz.auto@sgs.com

India - Gurgaon
t +91 124 6776000-09
autotesting.india@sgs.com

India - Pune
t +91 2135 615300
autotesting.india@sgs.com

SGS IS THE WORLD'S LEADING INSPECTION, VERIFICATION, TESTING AND CERTIFICATION COMPANY. SGS IS RECOGNISED AS THE GLOBAL BENCHMARK FOR QUALITY AND INTEGRITY. WITH MORE THAN 67,000 EMPLOYEES, SGS OPERATES A NETWORK OF OVER 1,250 OFFICES AND LABORATORIES AROUND THE WORLD.

WHEN YOU NEED TO BE SURE

SGS